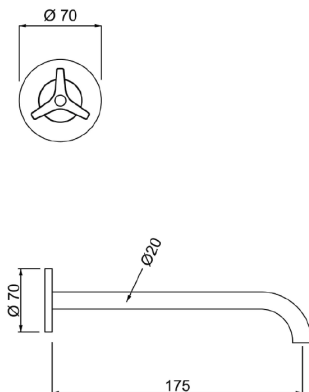
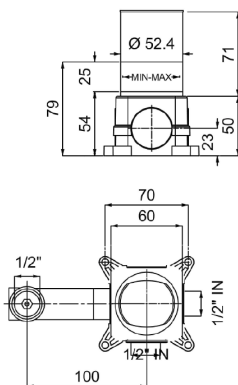




## JASPER WALL-MOUNTED TAP



### Technical Characteristics

Material: Brass

Finishes: polished chrome plated

Flow Rate: 6 l/min.

### Product Characteristics

The materials used in the construction of this product have been carefully chosen to fulfill the intended function.

### Cleaning

For correct cleaning of the tap, wash it only with solvent-free soaps. absolutely avoid the use of detergents containing corrosive or acid substances (hydrochloric, acetic, phosphoric acid), abrasive sponges and swabs with metal wires, we recommend the use of a detergent with a neutral PH.

### Quality

All LONDON BASIN COMPANY LTD products are 100% checked during the packaging process, ensuring their tightness and functionality.

### Accessories

Replacement accessories are not included with this product.

### Components

Ceramic Headworks:

- Recommended working pressure: 1-5 bar
- Recommended temperature:  $\leq 90^{\circ}\text{C}$
- Life Cycle: > 200.000
- Ceramic: AL2 03

Aerator: M20X1